



The **MPSINTEGRA** family of internal gear pumps (IX) and variable drive units (VX) is equipped with helical gear sets for noise reduction.



- ▶ **MPSINTEGRA VX** reduces installation space compared to state-of-the-art drive units
- ▶ Compact diameter by high-speed motor
- ▶ Modular configuration kit
- ▶ Combined flow path for power & cooling



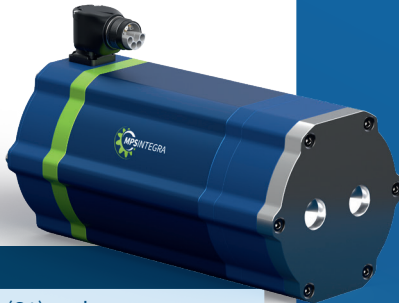
VX 2

Nominal Power (S1) and pressure

6-18 kW and 280 bar

Volume flow

70 litres/min



VX 1

Nominal Power (S1) and pressure

1-6 kW and 280 bar

Volume flow

max. 35 litres/min



IX 2

Pressure

280 bar

Displacement Volume

5,5 cc/rev to 22 cc/rev
up to 6000 rpm

Key features of our MPSINTEGRA Product Family:

A fully integrated, modular line of variable drive units. Designed for mobile and off-highway applications.

MPSINTEGRA VX is the world's first fully compensated electrohydraulic variable drive unit with helical gearing for 280 bar applications.

The VX INTEGRA offers:

- ▶ Efficiency
- ▶ 1Q, 2Q and 4Q operation
- ▶ Modular product family
- ▶ Power supply 48 to 700V +
- ▶ Power Density
- ▶ Noise reduction up to 10 dB(A)
- ▶ Robustness
- ▶ Wide temperature range
- ▶ Performance level d or e capability (ISO 13849)

MPSINTEGRA IX is the world's first fully compensated internal gear pump with helical gearing for noise reduction up to 10 dB(A) during operation and up to 280bar nominal pressure.

The IX INTEGRA offers:

- ▶ Designed for mobile and off-highway applications
- ▶ Noise reduction
- ▶ High Efficiency
- ▶ Variable speed
- ▶ 1Q, 2Q and 4Q operation
- ▶ Robustness and wide temperature range